

[View this email in your browser](#)



Eating Disorders In weight-related Therapy

## EDIT Collaboration Newsletter October 2023

### EDIT Collaboration Webinar This Week

**Words will never hurt me? Preferred terms for describing weight and loss of control eating**



Eating Disorders In weight-related Therapy



**A/Prof Rachel Barnes**

*Associate Professor and licensed clinical psychologist specialising in eating and weight disorder, University of Minnesota*



**Dr Jackie Yourell**

*Postdoctoral Research Fellow, Fit Minded Inc PhD in Youth Development and Family Sciences, University of Florida*



Friday November 3, 8:00am AEDT  
Thursday November 2, 5:00pm EDT  
Thursday November 2, 9:00pm GMT

[@EDIT\\_Collab](#) [editcollaboration.com](#)

[Click here to register](#)

### Study Update

- **Data processing update** – Our team is currently mapping and coding the raw trial data to the EDIT variables. We have completed this process for 20 trials across both adult and adolescent trials. If you still have data to send us, please contact the study team. We are aiming to complete data processing by early to mid-2024.

harmonisation and have expertise relating to measurement of eating disorder risk, mental health, eating behaviour, body dissatisfaction, self-esteem and quality of life related outcomes, please contact the study team.

- **Intervention deconstruction update** – All trials eligible for EDIT have now been coded based on our detailed [EDIT Framework](#). We are in the process of verifying trial coding with trialists. To date, verification meetings have been completed for 11 trials. Remaining trialists will be contacted over the next few weeks. We are aiming to complete coding verification by the end of 2023/early 2024.

[Contact Us](#)

---

### Annual Collaborator Forum

Collaborators have been sent a calendar invitation for the EDIT Annual Collaborator Forum. At the forum, we will update on the achievements of 2023 and discuss plans for 2024. If you have not received this calendar invitation, please contact the study team.



#### **DATE & TIME**

AEDT Thurs 7 Dec, 0800

PST Wed Dec 6, 1300

EST Wed Dec 6, 1600

GMT Wed Dec 6, 2100

---

**EDIT Study Team at Australia New Zealand Obesity Society (ANZOS) Conference**



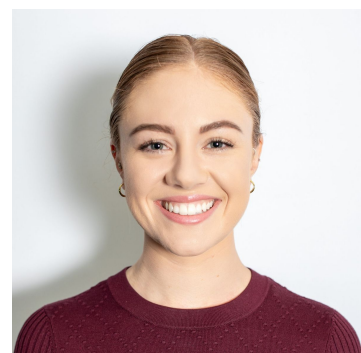
**“Contextualising eating disorder concerns for adolescent weight management”** at the Australia New Zealand Obesity Society Conference in Adelaide.



The Sydney-based study team enjoyed meeting with the intervention deconstruction methods team, Dr Brittany Johnson and Samantha Pryde, from Flinders University in the Adelaide sun. We are busy planning the next steps for the intervention deconstruction and planning collaborator meetings for 2024.

## Welcome Isabelle Jardine to the EDIT Study Team

Isabelle Jardine is an Accredited Practising Dietitian (APD) and has joined the EDIT study team as a Project Officer. She completed her Bachelor of Nutrition and Dietetics (Honours) at the University of Wollongong and has a passion in the space of mental health, with a focus on eating disorders in weight-related therapies.



## New publications by Collaborators

[Desmet, M., et al. 2023. Attrition rate and predictors of a monitoring mHealth application in adolescents with obesity. \*Pediatric Obesity\*, p.e13071.](#)

[Höchstmann, C., et al. 2023. The Personalized Nutrition Study \(POINTS\): evaluation of a genetically informed weight loss approach, a Randomized Clinical Trial. \*Nature Communications\*, 14\(1\), p.6321.](#)

[Lister, N.B., et al. 2023. Child and adolescent obesity. \*Nature Reviews Disease Primers\*, 9\(1\), p.24.](#)

[Nutter, S., et al. 2023. Changing the global obesity narrative to recognize and reduce weight stigma: A position statement from the World Obesity Federation. \*Obesity Reviews\*, p.e13642.](#)

[Sharp, G., et al. 2023. New anti-obesity medications: Considerations and future directions in people with concurrent eating disorders. \*Australian Journal of General Practice\*, 52\(9\), pp.651-653.](#)

[Pearl, R.L., et al. 2023. Opportunities to advance research, intervention, and policy on stigma, eating disorders, and body image. \*Journal of Eating Disorders\*, 11\(1\), pp.1-4.](#)

Please send us any relevant publications to include in future newsletters and share with collaborators.



Eating Disorders In weight-related Therapy



@EDIT\_Collab



www.editcollaboration.com

For further information, please contact the study team at [edit.study@sydney.edu.au](mailto:edit.study@sydney.edu.au)

The EDIT Collaboration is funded by a National Health and Medical Research Foundation Ideas Grant #2002310.

If you would like to unsubscribe from these emails, please reply to this email with 'unsubscribe'.